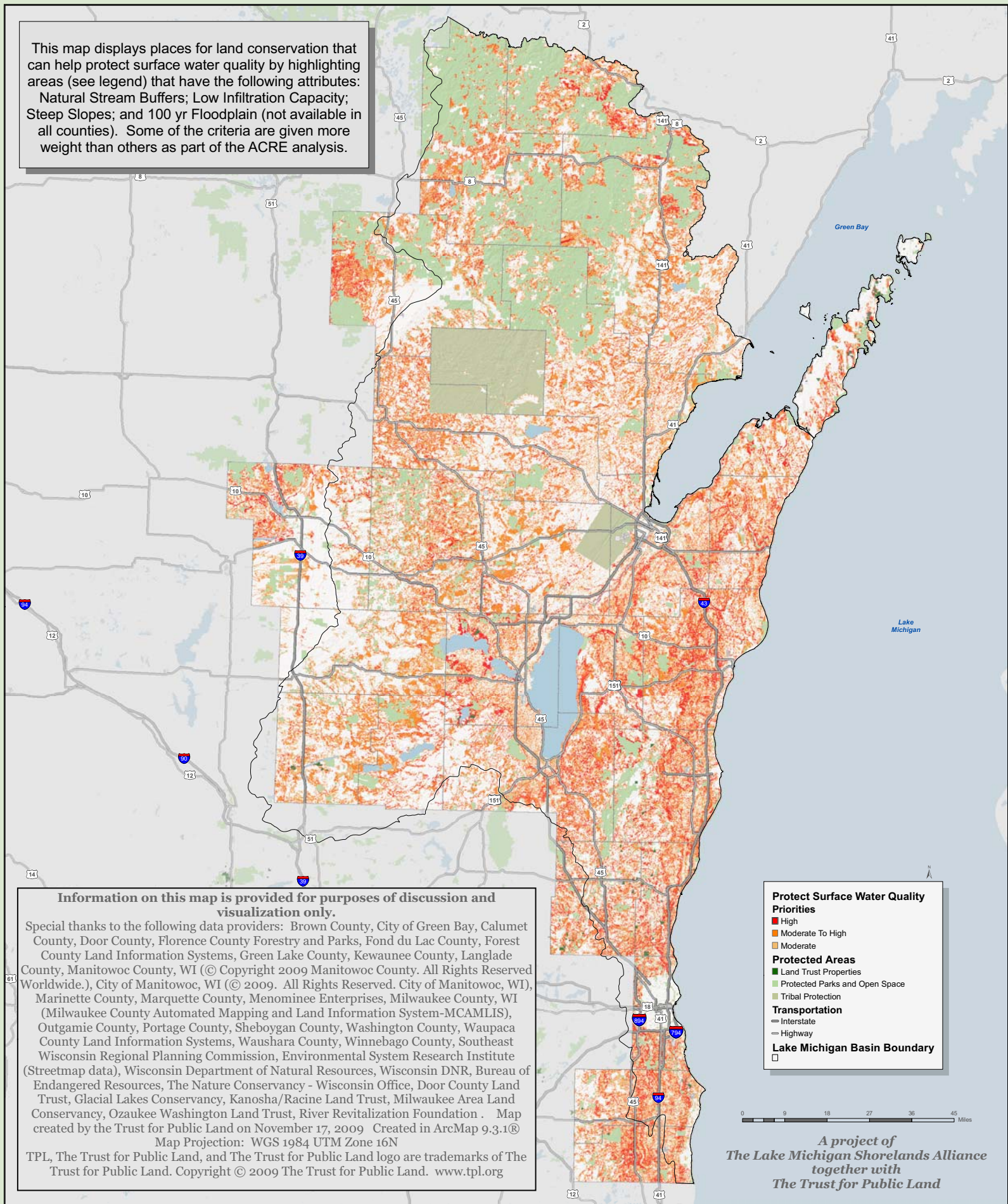


# A Critical Resource Evaluation (ACRE) for the Lake Michigan Shorelands Alliance

## Conservation Priority: Protect Surface Water Quality

This map displays places for land conservation that can help protect surface water quality by highlighting areas (see legend) that have the following attributes: Natural Stream Buffers; Low Infiltration Capacity; Steep Slopes; and 100 yr Floodplain (not available in all counties). Some of the criteria are given more weight than others as part of the ACRE analysis.



**Information on this map is provided for purposes of discussion and visualization only.**

Special thanks to the following data providers: Brown County, City of Green Bay, Calumet County, Door County, Florence County Forestry and Parks, Fond du Lac County, Forest County Land Information Systems, Green Lake County, Kewaunee County, Langlade County, Manitowoc County, WI (© Copyright 2009 Manitowoc County. All Rights Reserved Worldwide.), City of Manitowoc, WI (© 2009. All Rights Reserved. City of Manitowoc, WI), Marinette County, Marquette County, Menominee Enterprises, Milwaukee County, WI (Milwaukee County Automated Mapping and Land Information System-MCAMLIS), Outagamie County, Portage County, Sheboygan County, Washington County, Waupaca County Land Information Systems, Waushara County, Winnebago County, Southeast Wisconsin Regional Planning Commission, Environmental System Research Institute (Streetmap data), Wisconsin Department of Natural Resources, Wisconsin DNR, Bureau of Endangered Resources, The Nature Conservancy - Wisconsin Office, Door County Land Trust, Glacial Lakes Conservancy, Kanosha/Racine Land Trust, Milwaukee Area Land Conservancy, Ozaukee Washington Land Trust, River Revitalization Foundation. Map created by the Trust for Public Land on November 17, 2009. Created in ArcMap 9.3.1®  
 Map Projection: WGS 1984 UTM Zone 16N  
 TPL, The Trust for Public Land, and The Trust for Public Land logo are trademarks of The Trust for Public Land. Copyright © 2009 The Trust for Public Land. www.tpl.org

**Protect Surface Water Quality Priorities**

- High
- Moderate To High
- Moderate

**Protected Areas**

- Land Trust Properties
- Protected Parks and Open Space
- Tribal Protection

**Transportation**

- Interstate
- Highway

**Lake Michigan Basin Boundary**

0 9 18 27 36 45 Miles

*A project of  
 The Lake Michigan Shorelands Alliance  
 together with  
 The Trust for Public Land*